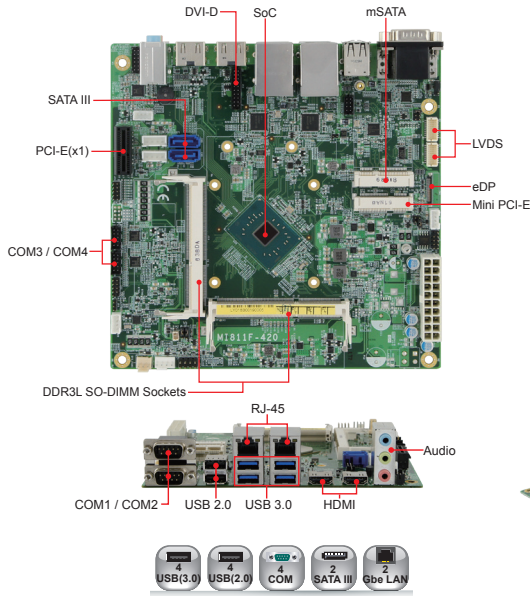


NEW



Features

- Intel® Pentium® QC N4200 @ 2.5GHz or Celeron® DC N3350 @ 2.4GHz on board
- 2x DDR3L SO-DIMM sockets, Max. 8GB
- Supports HDMI, HDMI / DVI-D and eDP / 24-bit dual channel LVDS
- 2x Intel® I211-AT PCI-E Gigabit LAN
- Watchdog timer, Digital I/O
- 4x USB 3.0, 4x USB 2.0, 4x COM, 2x SATA III
- 1x PCI-E(x1), 1x Mini PCI-E, 1x mSATA



System

CPU	Intel® Pentium® QC N4200 @ 1.1GHz ~ 2.5GHz Intel® Celeron® DC N3350 @ 1.1GHz ~ 2.4GHz
System Memory	2x DDR3L-1866 SO-DIMM socket, Max. 8GB
BIOS	AMI
Watchdog Timer	256 levels
SSD	1x mSATA
H/W Monitor	Yes
Expansion Slots	1x PCI-E(1x), 1x Mini PCI-E

Mechanical and Environmental

Dimensions	170mm x 170mm (6.7" x 6.7")
Max. Power Requirement	Intel® Pentium® N4200 2.5GHz w/ 2x DDR3L 1600 4GB + 12V: 1.27A
Operating Temperature	0°C~60°C (32°F~140°F)
Storage Temperature	-20°C~80°C (-4°F~176°F)
Relative Humidity	90% (non-condensing @60°C)

Graphics

VGA Controller	Intel® Pentium® SoC integrated Intel® Gen 9 graphics
VGA Memory	Shared memory
Display Interface	Supports HDMI, 2nd HDMI or DVI-D, eDP or 24-bit dual channel LVDS

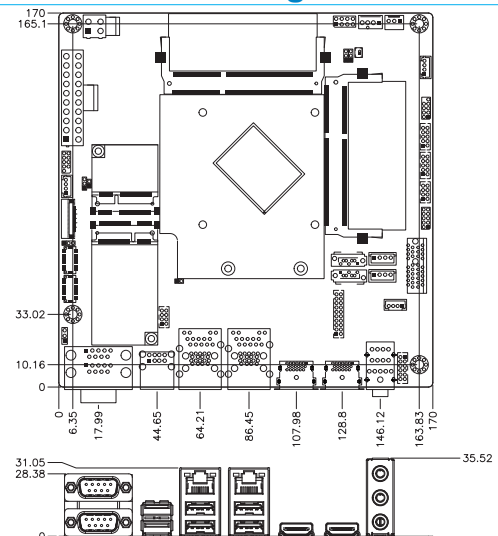
Ordering Information

MI811F-420	Intel® Pentium® N4200(1.1~2.5GHz) onboard Mini-ITX motherboard with heatsink, w/ HDMI#1, HDMI#2 or DVI-D, eDP or LVDS, 2x PCI-E Gigabit LAN, ATX-in
MI811F-420D	Intel® Pentium® N4200(1.1~2.5GHz) onboard Mini-ITX motherboard with heatsink, w/ HDMI#1, HDMI#2 or DVI-D, eDP or LVDS, 2x PCI-E Gigabit LAN, 12V~24V DC-in
MI811F-335	Intel® Celeron® N3350(1.1~2.4GHz) onboard Mini-ITX motherboard with heatsink, w/ HDMI#1, HDMI#2 or DVI-D, eDP or LVDS, 2x PCI-E Gigabit LAN, ATX-in
MI811F-335D	Intel® Celeron® N3350(1.1~2.4GHz) onboard Mini-ITX motherboard with heatsink, w/ HDMI#1, HDMI#2 or DVI-D, eDP or LVDS, 2x PCI-E Gigabit LAN, 12V~24V DC-in

LAN

Controller	Intel® I211AT PCI-E Gigabit LAN
Connector	RJ-45 on board

Dimensions and Drawing



Multi I/O

I/O Chipset	Fintek F81846AD-1 1x RS232/422/485(Jumperless selection), 3x RS232
USB	4 ports onboard (USB 3.0) 2 ports onboard + 2 ports via pin header (USB 2.0)
Serial ATA	2x SATA III
Audio	Intel® Pentium® SoC built-in High Definition Audio controller + Realtek ALC283 w/ 2.1 channels+ amplifier
Others	Digital I/O (4-in/4-out); ATX or 12V~24V DC-in ; EUP/ErP