



Features

- 2-axis Motion Controller
- Max. 100Mbps transfer rate
- Ultra compact, a 2-axis driver integrated controller
- 2-phase bi-polar current driving system
- 2-phase motor x 2 with encoder
- Max. output current 2.0A
- 1/256 micro step
- Encoder feedback

Specifications

Serial interface	Fast Ethernet, Full-Duplex
Distributed Clock	0.5 / 1 / 2 / 4ms
Cable type	CAT5 UTP / STP Ethernet cable
Surge protection	10KV
Transmission speed	100Mbps
Support mode	CSP, PP, Home
Incremental encoder input	±EA x2, ±EB x2
Encoder index signal input	±EZ x2
I/O input signal	PEL x2, MEL x2, ORG x2, SD x2 and EMG x2
Position compare output	CMP x 2, 255 points / ch.
Position control	Incremental mode / Absolute mode Data range: 32bits
Homing mode	ORG, EZ, SD, Limit & totally 31 types
Input voltage	24VDC
Drive model	2-phase, bi-polar current driving system
Current consumption	3.0W typical (120mA/24VDC) no load
Ambient temperature	In use: 0 ~ 50°C In storage: -20 ~ 70°C
Humidity	In use: 35 ~ 85% (Non-condensing) In storage: 10 ~ 90% (Non-condensing)
Micro step	1, 1/2, 1/4, 1/8, 1/16, 1/32, 1/64, 1/128, 1/256 selected by rotary switch 0~8
LED indicator	EL+, EL-, ORG, EMG, SD, FAULT, PWR
Protection functions	Connect to current sense resistor for bridge A.B = 2A
Current setting	Current: Max. 2.0A Selected: Using a variable resistor STOP: 0~F RUN: 0~F

Ordering Information

STP-K121-KITA	EtherCAT® 2-axis microstep driver with 2-phase motors w. encoder
STP-K121-KITB	EtherCAT® 2-axis microstep driver with 2-phase motors wo. encoder
SCB-1BB-06A/10A /20A/30A/50A/A0A	CAT5 LAN cable, 0.6M/1M/2M/3M/5M/10M

Dimensions and Drawing

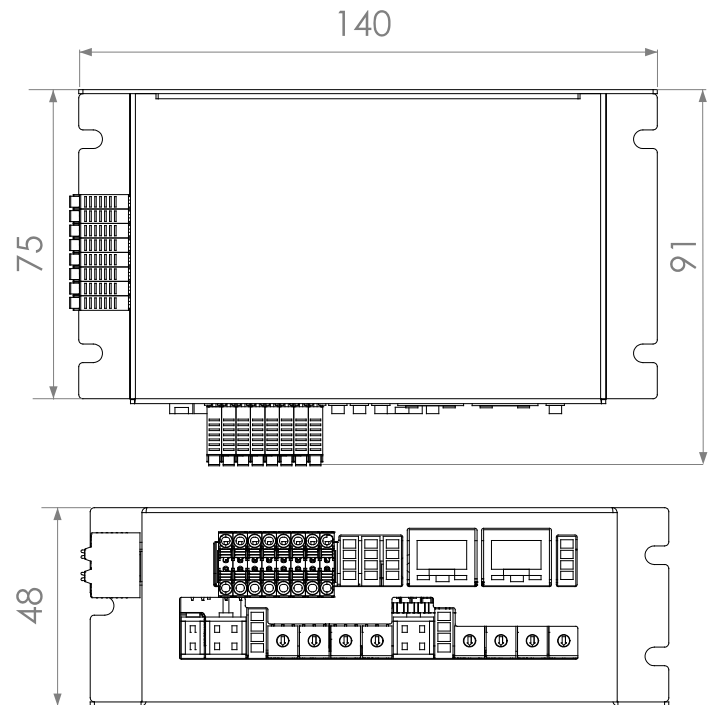
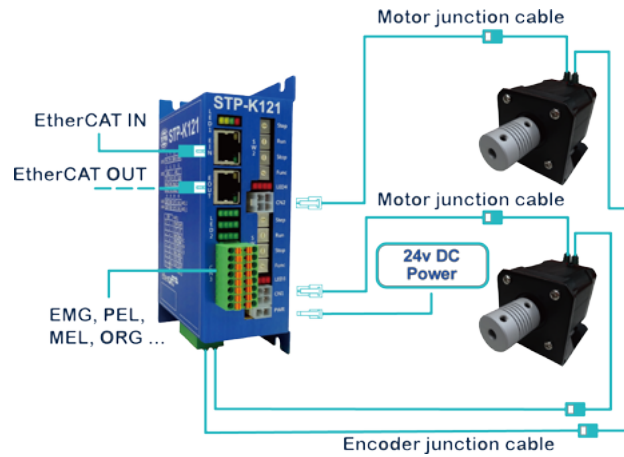
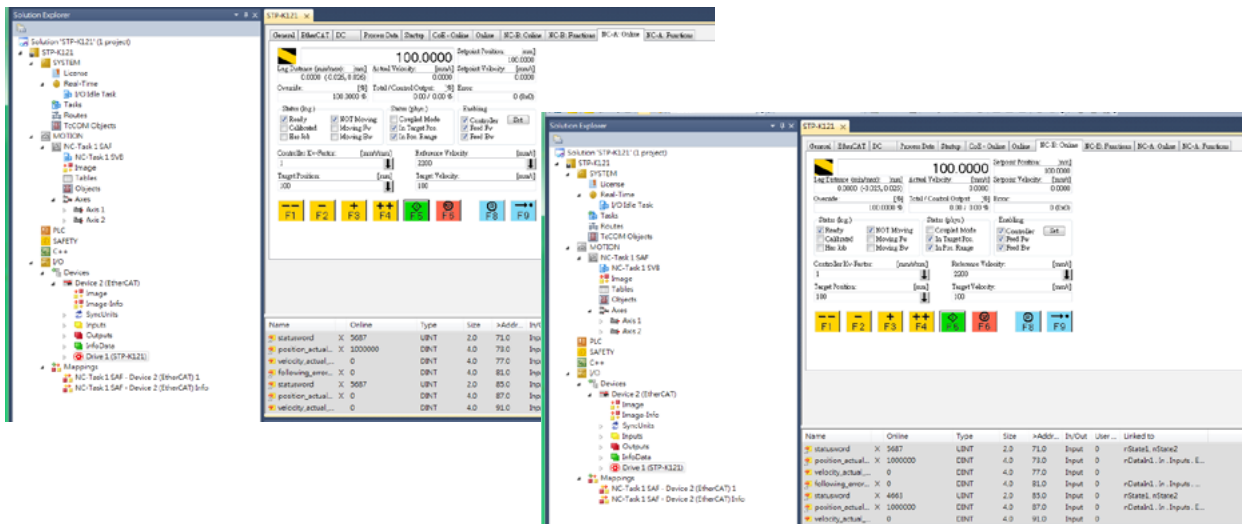


Illustration of Wiring



TwinCAT



EtherCAT® Utility: ECATNavi

