

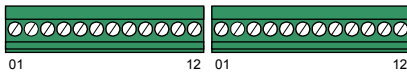
Features

- DIN rail mounting (L-75 x W-124 x H-34 mm)
- Max. 20Mbps transfer rate
- Easy installation with RJ45 phone jack and LED diagnostic
- Position compare and trigger output
- Compare output FIFO x 4
- 4-Ch. Encoder input

Specifications

Serial interface	Half duplex RS-485 with transformer isolation
Cable type	CAT5 UTP/STP Ethernet cable
Surge protection	10KV
Transmission speed	2.5Mbps, 5Mbps, 10Mbps and 20Mbps
I/O isolation voltage	3750Vrms
Encoder Ch.	4 Ch. independent 32-bit encoder
Input type	Isolated
Isolated input voltage	Logic level 0: 1V Max. Logic level 1: 5V or 24V
Incremental encoder	±EA x 4, ±EB x 4
Alarm output	Alarm on counter 0 ~ 3
Position compare output	CMP x 4, 1024 points / ch.
Power input	18VDC to 36VDC
Power consumption	1.5W typical
Working temperature	0 to 60°C

Terminal Assignment



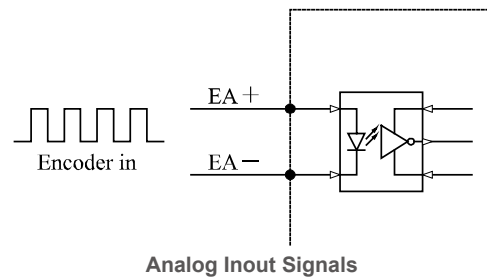
EAX+	01	01	EAU+
EAX-	02	02	EAU-
EBX+	03	03	EBU+
EBX-	04	04	EBU-
EAY+	05	05	CMPX
EAY-	06	06	CMPY
EBY+	07	07	CMPZ
EBY-	08	08	CMPU
EAZ+	09	09	DOX
EAZ-	10	10	DOY
EBZ+	11	11	DOZ
EBZ-	12	12	DOU

Terminal Definitions (CN4)

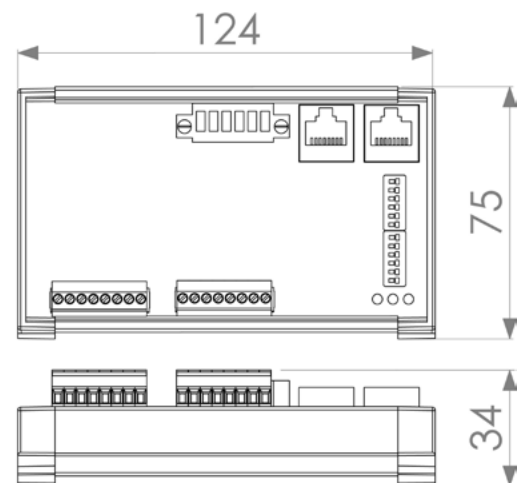
Ordering Information

108-C144	4-Ch. Encoder input module
SCB-1BB-06A/10A/20A/30A/50A/A0A	CAT5 LAN cable, 0.6M/1M/2M/3M/5M/10M

Signal Wiring Diagram



Dimensions and Drawing



Unit:mm