

IBASE Technology Inc.

(Stock Code : 8050)



113 Q1 Online Investor Conference

2024/05/21

Brian Shang – Executive VP (Spokesman)

Benny Lin – Director (Finance Department)

Lucy Hsiao – Manager (Finance Department)

Jacky Ho – Special Assistant (Office of the President)

- The content of this presentation, including the information disclosed in this conference, contains predictive statements for reference only. IBASE Technology Co., Ltd. or any third party does not assume any responsibility for the correctness and completeness of the predictive statements, and undertakes no duty to update or revise any such statements.
- Do not disseminate, reproduce, or make any or all of this information available to third parties without permission.

Agenda

01 About IBASE **Company Overview**

02 Financial Information Latest Information Sharing

03 Case Studies Customer Successful Stories Sharing

04 Summary Q&A

Company Snapshot



HQ

Taipei,
Taiwan



Founded

February
2000

**Design and Manufacturing of
Robust Computing Platforms**



Capital

US\$
66.5M



Revenue

US\$
193M
(2023)



**Stock
Code**

TPEX
8050
(Since 2003)



Chairman

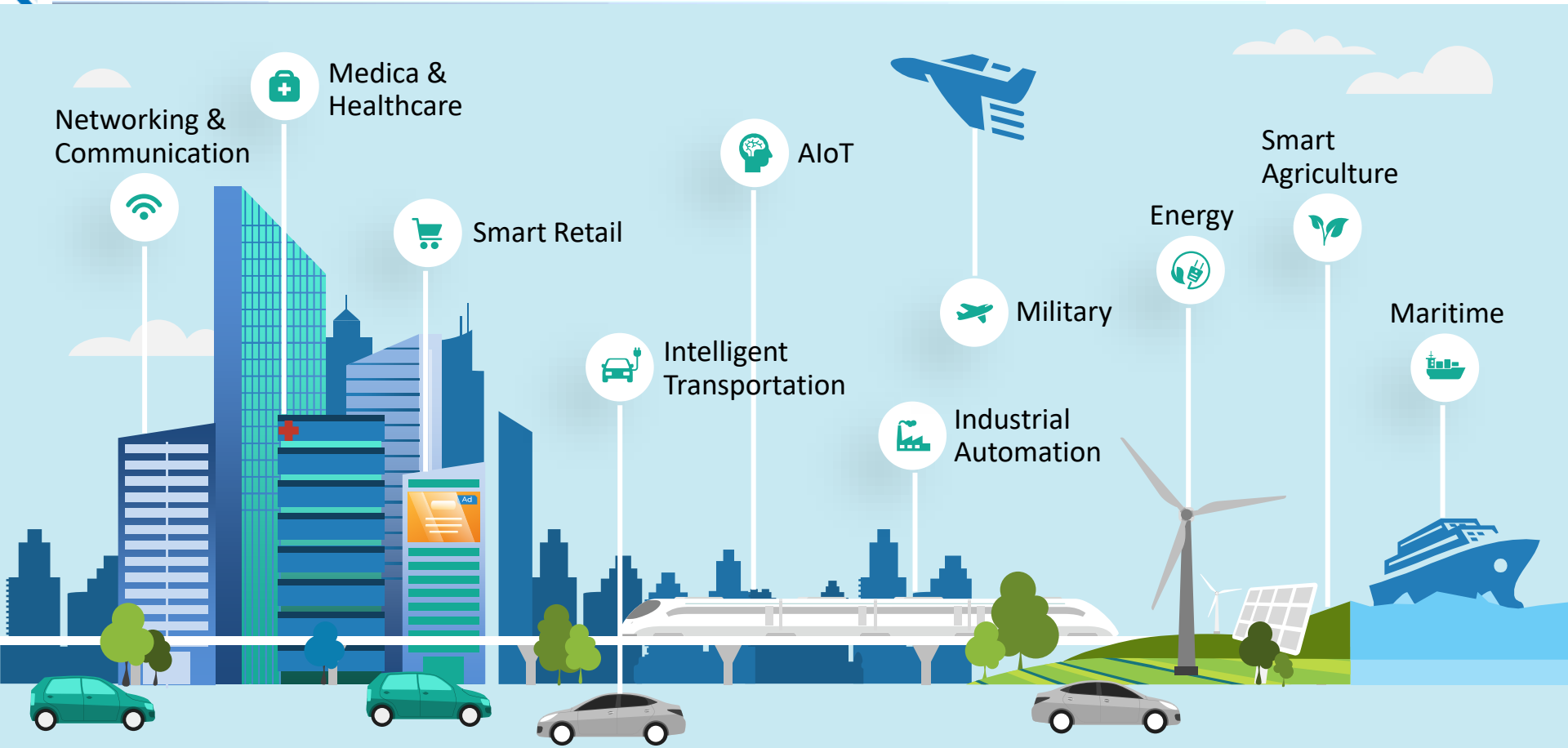
C. S. Lin



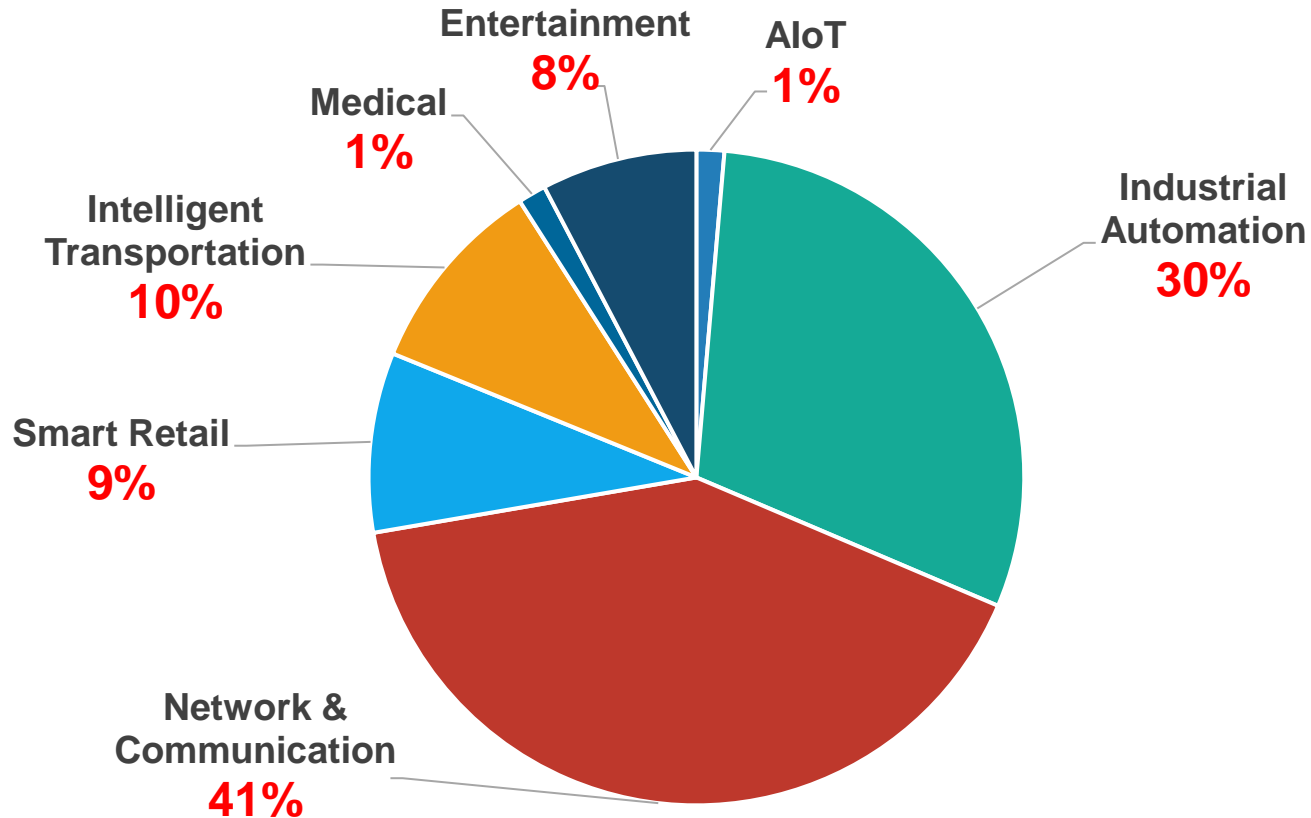
Employees

980
(Worldwide)
750
(IBASE HQ)

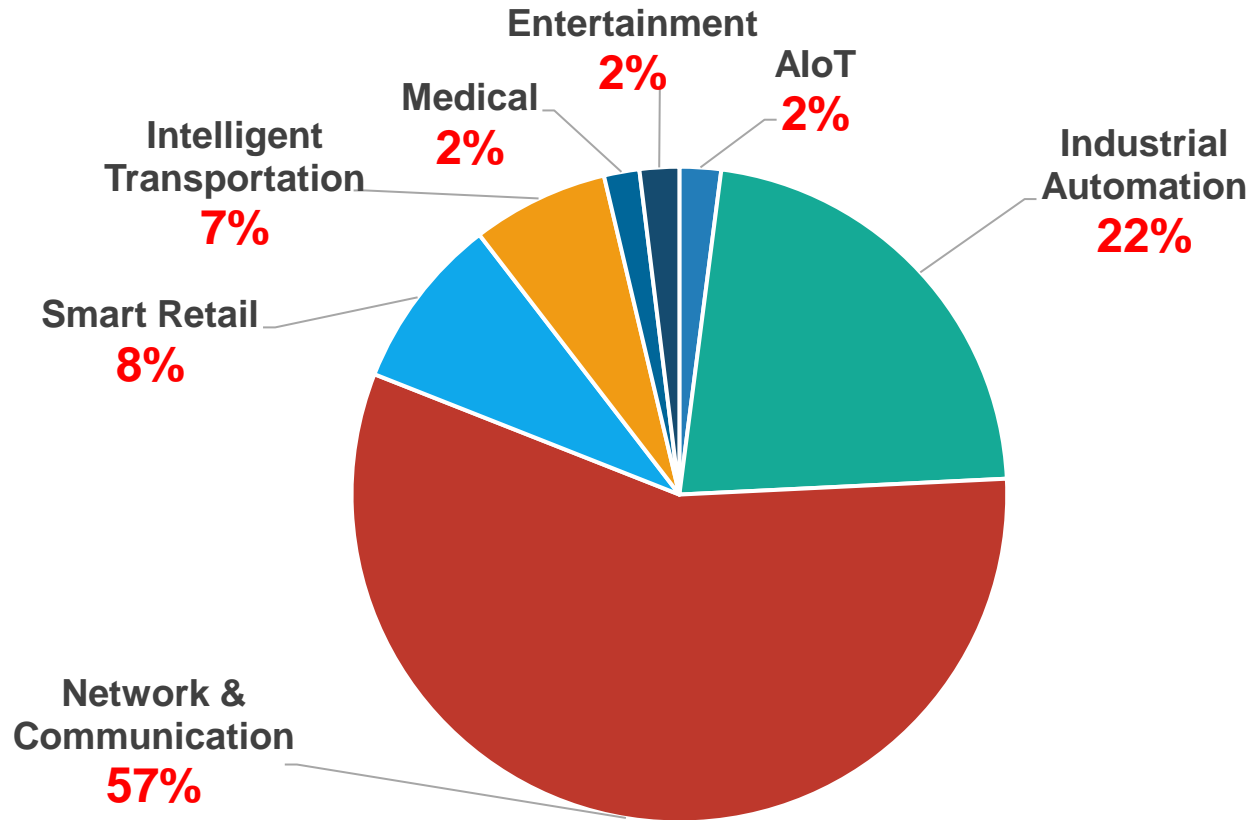
Vertical Applications



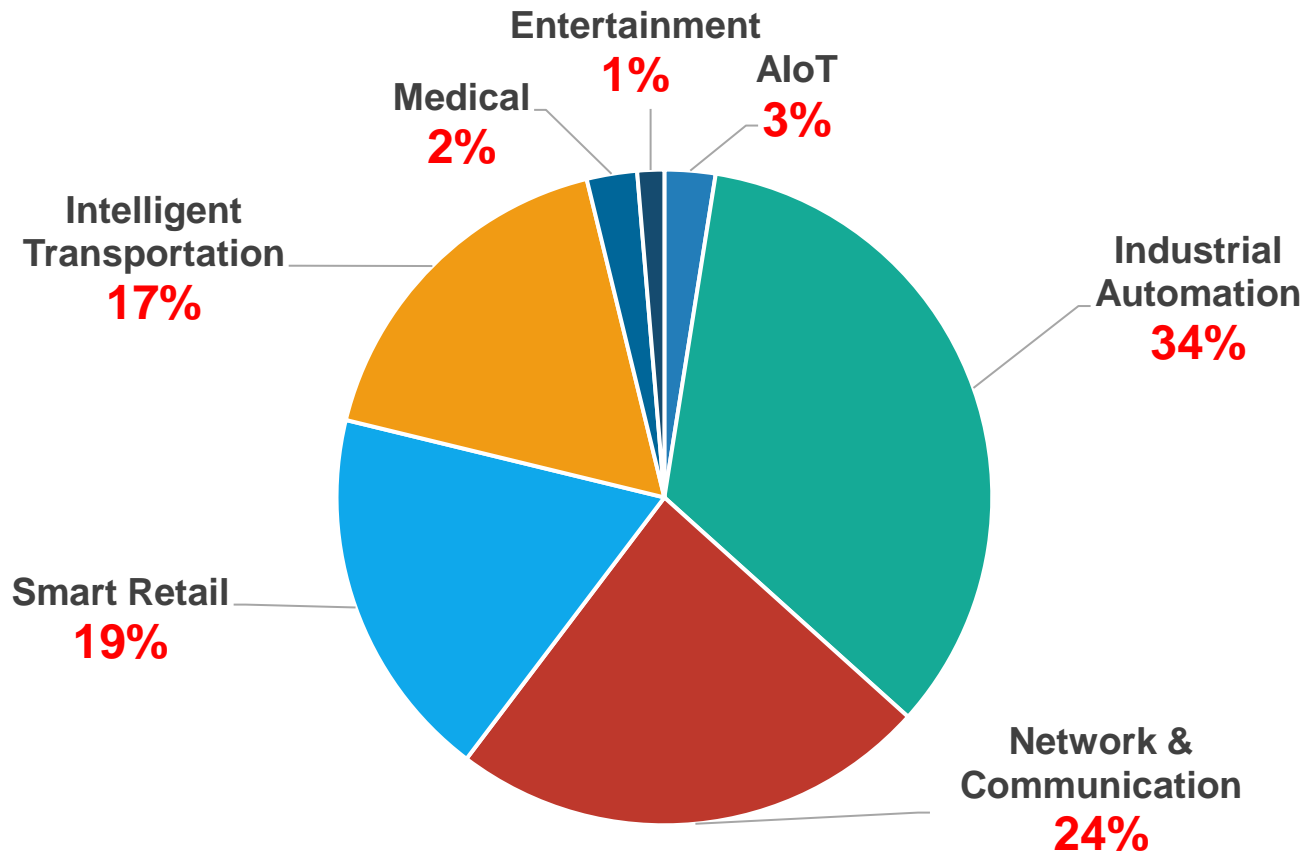
2022 Sales Breakdown – By Application



2023 Sales Breakdown – By Application



2024 Q1 Sales Breakdown – By Application



Worldwide Presence




**Design & Manufacturing
100% in Taiwan**

Headquarters
**Taiwan**
Taipei

Manufacturing Sites
**Taiwan**
Ping-Zhen

**Hsin-Chuang**

**San-Chung**

IBASE Upcoming Manufacturing Site in Vietnam



Q1, 2025
Available



Estimated Total Size

194,106 Square-foot
(18,033 m² / 5,455 Ping)

Estimated Capacity

- SMT Line x 6
- DIP Assembly Line x 6
- System Assembly Line x 10

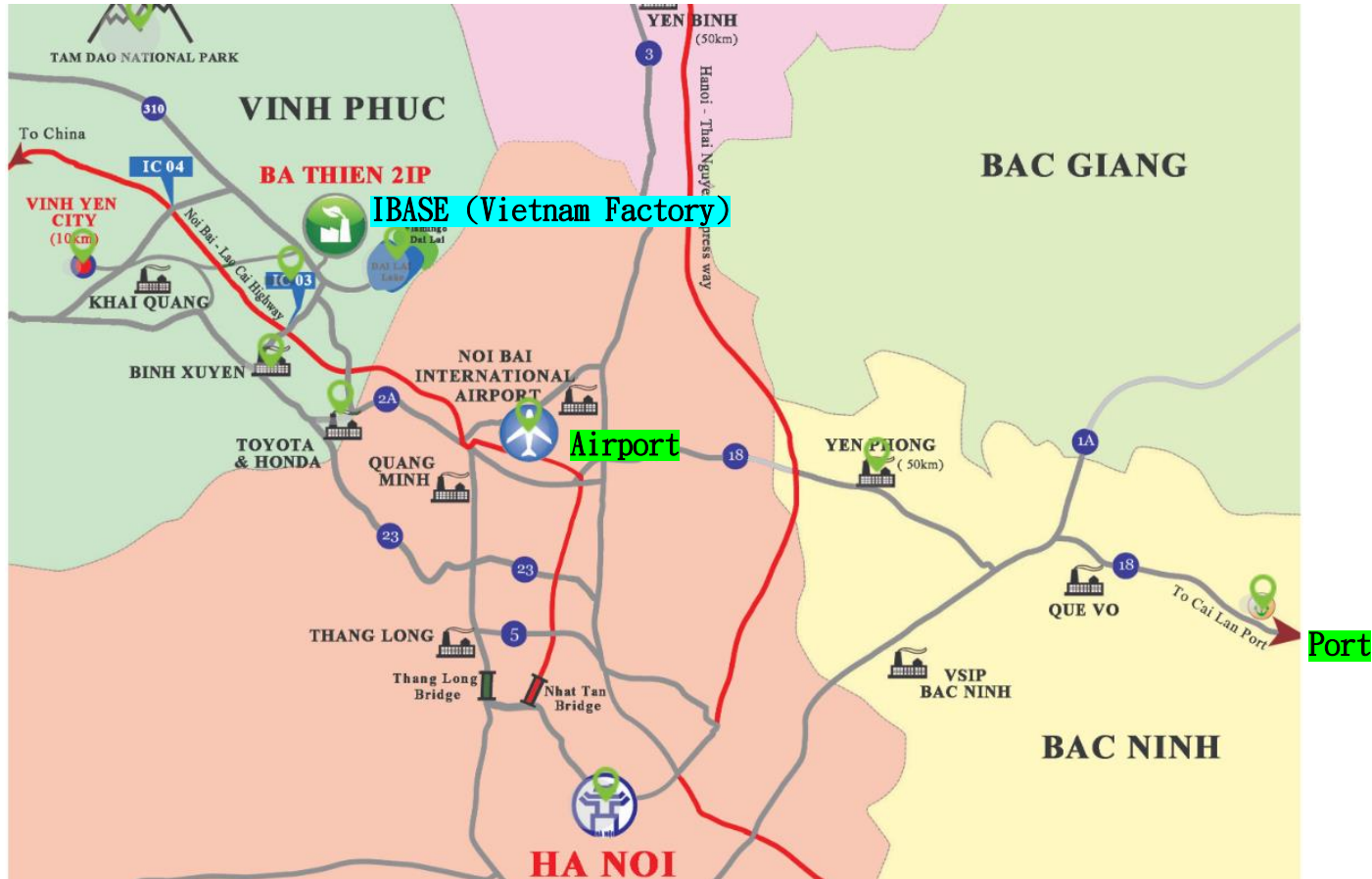
PCBA

60K/month

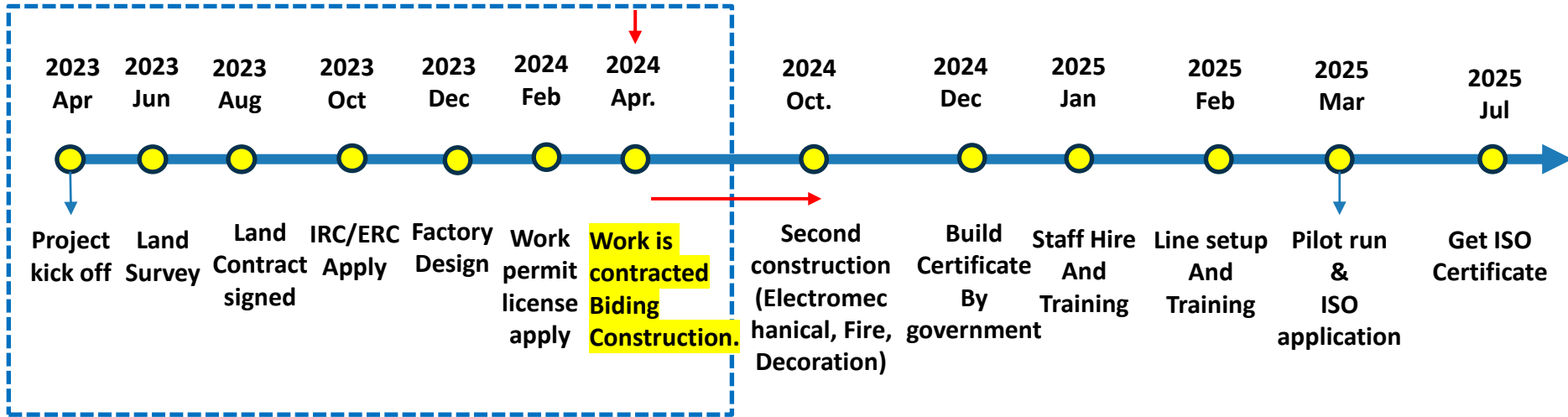
System Assembly

30K/month

Location of IBASE Vietnam Factory



Vietnam Factory Build Up Schedule Plan



Agenda

01 About IBASE Company Overview

02 Financial Information Latest Information Sharing

03 Case Studies Customer Successful Stories Sharing

04 Summary Q&A

Condensed Balance Sheet-Consolidated

Unit: NT\$ thousand

Date/Item	2024.03.31	2023.12.31
Current assets	5,545,743	6,386,855
Investments accounted for using the equity method	2,751,490	2,631,181
Property, plant and equipment	3,838,885	3,799,915
Other non-current assets	715,488	752,725
TOTAL ASSETS	12,851,606	13,570,676
Current portion of bonds payable	713,445	709,928
Current portion of long-term borrowings	118,477	122,241
Other current liabilities	1,605,716	1,854,210
Long-term borrowings	1,305,764	2,189,648
Other non-current liabilities	67,030	65,916
Total liabilities	3,810,432	4,941,943
Ordinary shares (Includes prepaid share capital)	2,060,568	2,068,218
Capital surplus	3,079,502	3,061,307
Retained earnings	2,766,403	2,567,700
Other equity	462,033	304,451
Treasury shares	(332,583)	(392,849)
Total equity attributable to owners of the Company	8,035,923	7,608,827
Non-controlling interests	1,005,251	1,019,906
Total equity	9,041,174	8,628,733
TOTAL LIABILITIES AND EQUITY	12,851,606	13,570,676

Condensed Statement of Comprehensive Income-Consolidated

Unit: NT\$ thousand

Quarter/Item	2024 First Quarter	2023 First Quarter	2023 Second Quarter	2023 Third Quarter	2023 Fourth Quarter	Year 2023
Operating revenue	986,318	1,617,116	1,538,648	1,509,773	1,331,325	5,996,862
Gross Profit	242,059	454,379	362,986	336,869	323,758	1,477,992
Gross Profit %	24.54%	28.10%	23.59%	22.31%	24.32%	24.65%
Profit (loss) from operations	-4,176	199,299	68,823	114,274	72,892	455,288
Profit from operations %	-0.423%	12.32%	4.47%	7.57%	5.48%	7.59%
Non-operating income and expenses	212,708	72,974	177,277	202,181	-109,661	342,771
Net Profit	183,963	233,714	199,396	270,291	-40,715	662,686
Earning per shares-Basic (NT\$)	1.37	1.87	1.69	1.91	-0.14	5.22

Financial Ratios-Consolidated

Item	2024.03.31	2023.12.31
Debt to assets ratio	29.65%	36.42%
Current ratio	227.51%	237.75%
Quick ratio	146.80%	169.55%
Account receivable turnover	4.34	5.18
Inventory turnover	1.64	2.2

Agenda

01 About IBASE Company Overview

02 Financial Information Latest Information Sharing

03 Case Studies Customer Successful Stories Sharing

04 Summary Q&A

Success Story – Smart Transportation Application

Electric Bicycle

Pedal-less design, powered directly by electric energy, provides motorcycle-like riding functions.



Electric Bicycle Control System



Success Story – Smart Warehouse Application

Warehouse Management

Equipped with automatic obstacle avoidance function, the system seamlessly completes missions along an automated orientation route.



Autonomous Mobile Robot System



Powered By
ASB200 Embedded System

Intel Core Platform



Success Story – Medical Application

3D Endoscopic Surgery

Harnessing AI deep learning technology, this system transforms 2D endoscopic images into 3D visuals, enhancing precision and safety of minimally invasive surgeries.



3D Visualization
System



Powered By
IBASE ODM System

Intel Core Platform



Success Story – Smart Agriculture Application

Intelligent Potato Sorting

The intelligent automatic sorting line effectively helps customers to perform high-speed and high-precision AI recognition, sorting, and grading on the farm.

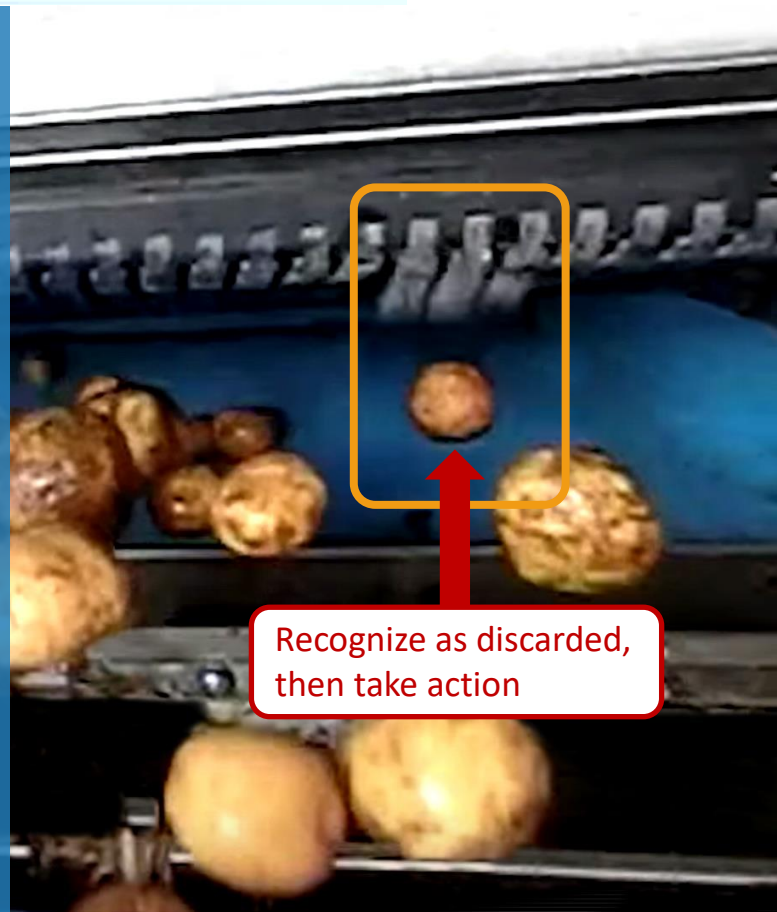


Vision Inspection
Sorting Control System



Powered By
MAF800 Industrial AI Computer

Intel Core Platform



Success Story – Intelligent Transportation Application

Parking Management

The IoT-enabled smart parking meter offers highly efficient parking management services, including real-time occupancy detection and seamless online payment options.



Case Study
Video

Intelligent Parking Meter



Powered By
IBASE ODM Board + System Assembly

NXP Platform



Success Story – Intelligent Transportation Application

Charging Station Management

The charging station offers convenient swappable battery exchange services at locations such as gas stations, convenience stores, and parking lots for a renowned electric scooter company.



Battery Swapping Station



Powered By

IBASE ODM Outdoor Panel PC
+ System Assembly

Intel Celeron Platform

Sunlight Readable +
IP65 Waterproof

Outdoor Panel PC
ODM Introduction



Success Story – Smart Retail Application

Driving Range Scoreboard

Serving as a digital scoreboard, the durable outdoor panel PC tally shots and gather data to generate comprehensive scores for driving ranges across the globe.



Outdoor
Entertainment System



Powered By
IBASE ODM Outdoor Panel PC

AMD Ryzen Platform

Sunlight Readable +
IP65 Waterproof

Outdoor Panel PC
ODM Introduction

Success Story – Smart Retail Application

Drive-In Menu Board

Employed as interactive menu board signage, the sunlight readable panel PC offers anti-reflection and waterproof properties, and convenient payment functions for drive-in restaurants.



Outdoor Ordering
System



Powered By
IBASE ODM Outdoor Panel PC

Intel Atom Platform



Sunlight Readable +
IP65 Waterproof

Outdoor Panel PC
ODM Introduction

Success Story – Smart Factory Application

Smart Factory Automatic Control System

Automate operations through smart production lines to effectively improve production.



Smart Control
System



Powered by
MAI602-M4D80 Computing System

Intel Core Platform



Success Story – Intelligent Transportation Application

AI Rail Transit Assists Driverless Vehicles

The AI-assisted unmanned driving system performs unmanned automatic operation through AI-assisted driving.



AI Driverless
Railway System



Powered By
SI-624-AI Edge AI Computing System

Intel Core Platform

Integrated CCD Camera



Success Story – Smart Detection Application

Customs Clearance AI Detection System

Through AI detection to automatically detect and identify to eliminate illegal or dangerous items and maintain flight safety.

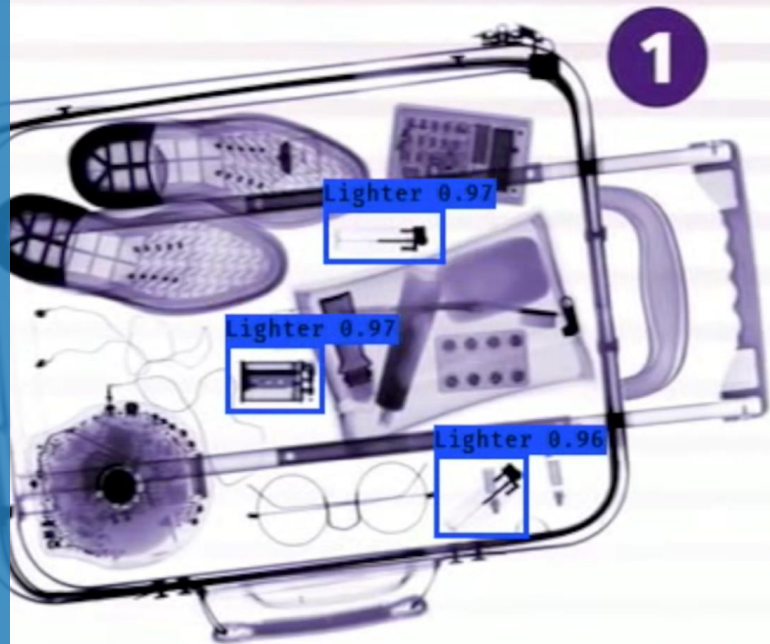


AI Intelligent Security Detection System



Powered by
SI-624-AI Edge AI Computing System

Intel Core Platform



Q & A



IBASE Technology Inc.

Bldg. F, 15F-1, No. 3,
Yuan Qu St., Nangang,
Taipei 115, Taiwan



+886-2-2655-7588



sales@ibase.com.tw



www.ibase.com.tw



www.ibase.com.tw